

RESEARCH DAY 2010



KEYNOTE SPEAKER

Kurt Kroenke, MD

*Professor of Medicine
Indiana University*



STATE OF THE ART PRESENTER

Arnold Wald, MD

*Professor of Medicine
University of Wisconsin*



STATE OF THE ART PRESENTER

Albena Halpert, MD

*Assistant Professor of
Medicine
Boston University*



STATE OF THE ART PRESENTER

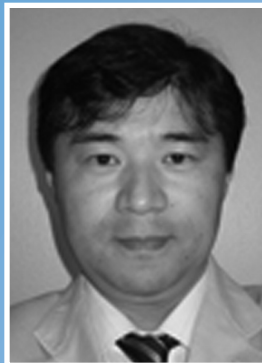
William Maixner, PhD, DDS

*Director, Center for
Neurosensory Disorders
UNC Chapel Hill*



**Rona L. Levy, MSW,
MPH, PhD, FACG, AGAF**

*Professor
University of Washington,
Seattle*



Motoyori Kanazawa, MD, PhD

*Associate Professor of Medicine
Department of Behavior Medicine
Tohoku University, Sendai,
Miyagi, Japan*



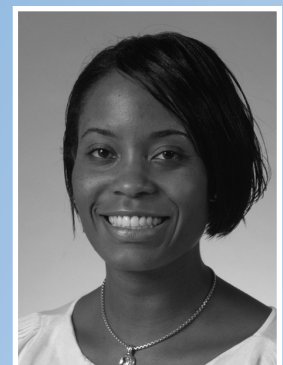
Susan Gaylord, PhD

*Assistant Professor of Medicine
UNC Chapel Hill*



Catherine Matthews, MD

*Associate Professor of Medicine
of OBGYN and Chief, Division
of Urogynecology
UNC Chapel Hill*



Barbara Robinson, PhD

*Fellow in Urogynecology,
Department of Obstetrics and
Gynecology
UNC Chapel Hill*

RESEARCH DAY 2010

RESEARCH DAY 2010

| Date | Time | Biopsychosocial Research at UNC Program |
|---|--|--|
| Day 1: Friday, November 5, 2010 UNC Chapel Hill Bioinformatics Building Auditorium | 12:30 PM | Registration |
| | 1:00 PM | Welcome William E. Whitehead, PhD and Douglas A. Drossman, MD <i>Co-Directors of the UNC Center for Functional GI & Motility Disorders</i> |
| | 1:10 PM | Keynote - Managing Multiple Symptoms in the GI Setting Kurt Kroenke, MD <i>Professor of Medicine, Indiana University</i> |
| | Self-Management Therapies Moderator: Douglas A. Drossman, MD | |
| | 1:40 PM | State of the Art - Expressive Writing: Promising Self-Management Therapy in IBS Albena Halpert, MD <i>Assistant Professor of Medicine, Section of Gastroenterology, Boston University</i> |
| | 2:10 PM | Treatment of IBS with Mindfulness-Based Stress Reduction Susan Gaylord, PhD <i>Assistant Professor of Medicine, UNC Chapel Hill</i> |
| | 2:30 PM | CBT for Children with Functional Abdominal Pain: Possible New Delivery Formats Rona L. Levy, MSW, PhD, MPH <i>Adjunct Professor of Medicine, University of Washington, Seattle</i> |
| | 2:40 PM | Multi-Component Point-of-Care Program to Improve FGID Spencer Dorn, MD, MPH <i>Assistant Professor of Medicine, UNC Chapel Hill</i> |
| | 3:00 PM | Break |
| | New Techniques for Diagnosis Moderator: William E. Whitehead, PhD | |
| | 3:10 PM | Predicting Diarrhea from Triggers and Warning Sensations: A Diary Study Olafur S. Palsson, PsyD <i>Associate Professor of Medicine, Division of Gastroenterology & Hepatology, UNC Chapel Hill</i> |
| | 3:30 PM | Characterizing IBS Symptoms Using Ecological Momentary Assessment Stephan Weinland, PhD <i>Assistant Professor of Medicine Division of Gastroenterology & Hepatology, UNC Chapel Hill</i> |
| | 3:50 PM | Development and Validation of a Fecal Incontinence Questionnaire Miranda van Tilburg, PhD <i>Assistant Professor of Medicine Division of Gastroenterology & Hepatology, UNC Chapel Hill</i> |
| | 4:10 PM | Development of a Scale to Measure Patient Satisfaction with Care Spencer Dorn, MD, MPH <i>Assistant Professor of Medicine Division of Gastroenterology & Hepatology, UNC Chapel Hill</i> |
| | 4:30 PM | Is Narcotic Use Related to Disease Activity in Patients with IBD-IBS Overlap? Millie Long, MD <i>Assistant Professor of Medicine Division of Gastroenterology & Hepatology, UNC Chapel Hill</i> |
| 4:50 PM | Adjournment | |
| 7:15 PM | Reception with Dinner Siena Hotel Ballroom | |

| | | |
|---|---|---|
| Day 2: Saturday, November 6, 2010 Siena Hotel, Chapel Hill | 7:30 AM | Breakfast Siena Hotel 1505 East Franklin Street, Chapel Hill, NC 27514 Il Palio Room |
| | Pain Management Moderator: Ademola Aderoju, MD | |
| | 8:00 AM | Results from the UNC Narcotic Bowel Syndrome Study Douglas A. Drossman, MD <i>Professor of Medicine & Psychiatry, Division of Gastroenterology & Hepatology, UNC Chapel Hill</i> |
| | 8:20 AM | Lubiprostone Effects on Pain William Whitehead, PhD <i>Professor of Medicine, Division of Gastroenterology & Hepatology, UNC Chapel Hill</i> |
| | 8:40 AM | Developing a Questionnaire to Identify Pain-Sensitive GI Subjects Olafur Palsson, PsyD <i>Associate Professor of Medicine, Division of Gastroenterology & Hepatology, UNC Chapel Hill</i> |
| | 9:00 AM | Treatment of Levator Ani (Rectal Pain) with Biofeedback William Whitehead, PhD <i>Professor of Medicine, Division of Gastroenterology & Hepatology, UNC Chapel Hill</i> |
| | 9:20 AM | CNS Down Regulation of Pain Sensitivity in IBS Steve Heymen, PhD <i>Assistant Professor of Medicine, Division of Gastroenterology & Hepatology, UNC Chapel Hill</i> |
| | 9:40 AM | What is the Impact of IBS on the Patient's Partner? Stephan Weinland, PhD <i>Assistant Professor of Medicine, Division of Gastroenterology & Hepatology, UNC Chapel Hill</i> |
| | 10:00AM | Break |
| | Post-Infectious IBS Moderator: Ryan Madanick, MD | |
| | 10:20 AM | Physiological Features of Post-Infectious IBS Motoyori Kanazawa, MD, PhD <i>Associate Professor, Department of Behavior Medicine, Tohoku University Graduate School of Medicine, Department of Behavioral Medicine, Sendai, Miyagi, Japan</i> |
| | 10:40 AM | Partnership with the Department of Health and Human Services to Recruit Post-Infectious IBS Patients Miranda van Tilburg, PhD <i>Assistant Professor of Medicine Division of Gastroenterology & Hepatology, UNC Chapel Hill</i> |

RESEARCH DAY 2010

| | | |
|---|---|--|
| Day 2: Saturday, November 6, 2010 Siena Hotel, Chapel Hill | Genetic Studies of IBS <i>Moderator: Douglas Morgan, MD, MPH</i> | |
| | 11:00 AM | State of the Art: Pain Genetics William Maixner, PhD, DDS <i>Director, Center for Neurosensory Disorders, UNC Chapel Hill</i> |
| | 11:30 AM | Possible Mitochondrial DNA Abnormalities in IBS Miranda van Tilburg, PhD <i>Assistant Professor of Medicine Division of Gastroenterology & Hepatology, UNC Chapel Hill</i> |
| | 11:50 AM | Heterogeneity of IBS Investigated with Structural Equation Modeling William Whitehead, PhD <i>Professor of Medicine, Division of Gastroenterology & Hepatology, UNC Chapel Hill</i> |
| | 12:10 PM | Lunch |
| | Pelvic Floor Disorders <i>Moderator: Catherine Matthews, MD</i> | |
| | 1:15 PM | State of the Art: Managing Fecal Incontinence Arnold Wald, MD <i>Professor of Medicine, Section of Gastroenterology & Hepatology, University of Wisconsin School of Medicine and Public Health, Madison, Wisconsin</i> |
| | 1:45 PM | Surgical Innovations for the Management of Fecal Incontinence Catherine Matthews, MD <i>Associate Professor of OBGYN and Chief, Division of Urogynecology, UNC Chapel Hill</i> |
| | 2:05 PM | Conservative Treatment of Fecal Incontinence Steve Heymen, PhD <i>Assistant Professor of Medicine, Division of Gastroenterology & Hepatology, UNC Chapel Hill</i> |
| | 2:25 PM | Influence of Stool Consistency and Urgency on Occurrence of Fecal Incontinence Barbara Robinson, MD <i>Fellow in Urogynecology, Department of Obstetrics and Gynecology, UNC Chapel Hill</i> |
| 2:45 PM | Simplified Test for the Diagnosis of Disordered Defecation (3-D Study) Steve Heymen, PhD <i>Assistant Professor of Medicine, Division of Gastroenterology & Hepatology, UNC Chapel Hill</i> | |
| 3:05 PM | Closing Remarks William E. Whitehead, PhD and Douglas A. Drossman, MD | |

HOTEL INFORMATION FOR OUR DISTINGUISHED GUESTS

**We have reserved a block of
rooms at a discounted rate.**

*When booking your room for
RESEARCH DAY or
PATIENT SYMPOSIUM,
please use the group name:*

**UNC Center for Functional GI &
Motility Disorders**

*For more details, please contact:
Sarah Barrett
slbarret@med.unc.edu*

SIENA HOTEL
1505 EAST FRANKLIN ST.
CHAPEL HILL, NC 27514
www.sienahotel.com

SAVE THE DATES!

**Attendance to
RESEARCH DAY
&
PATIENT SYMPOSIUM
ARE FREE!**

Please register online at:
WWW.MED.UNC.EDU/IBS